

2/22/2016

Additional questions submitted by vendors for the PSIM RFP. Answers are in red.

### Intercom Control

On the intercom function do the 7 stations need to be able to communicate with each other, or just from each station to the intercom locations. The 7 stations are called masters, Do the Masters need to be able to communicate with each other. **ONLY MASTER CONTROL SHOULD TALK TO ALL LOCATIONS. EACH STATION ONLY TALKS BACK TO MASTER CONTROL. NO COMMUNICATION VIA INTERCOM FROM TOWER TO TOWER OR TO MEDICAL OR COURT HOLDING ETC. IS NEEDED.**

### Central Control

- 1) It was mentioned that the new video monitors only need to show the original analog cameras and to use those images for the camera call-up functions. Is that correct? **CORRECT**
- 2) It was said that the large GeoVision screen in the closet behind the elevator needed to be incorporated into Central Control. Please explain what the desire is for this monitor. **THE INTENT IS TO REPLICATE WHAT IS LOCATED AT THE JAIL SGT. CLOSET IN MASTER CONTROL. DOING THIS WILL PROVIDE MASTER CONTROL OPERATORS THE ABILITY TO WATCH ADDITIONAL LOCATIONS INCLUDING FISHEYE CAMERAS OUTSIDE OF THE PSIM CONSOLE ON A SEPARATE MONITOR.**
- 3) Do you want the new sally port camera and monitor in the corner of the desk to be incorporated into the CCTV system? **YES, AS WELL AS THE ONES IN THE DIAGRAM ATTACHED. (EXCLUDING FISHEYE CAMERAS).**
- 4) Would you like the elevator controls to be incorporated into the new touch screens? What about the vehicle gates? **NO ELEVATOR CONTROLS. ALL GATES (6 TOTAL) ARE DIRECT CONTACT SWITCHED CRUSH GATES. THE OPERATOR MUST PRESS AND HOLD THE BUTTON DURING OPERATION FOR CLOSING AND OPENING. (AUTOMATIC OPEN AND CLOSE FEATURES ARE NOT ACCEPTABLE.)**

### Nurse Station

If this panel could be re-used in this location would you like the option to leave it or should it be replaced with a touch screen as well? **NO. ALL OPERATOR PANELS TO BE REPLACED WITH A TOUCH SCREEN CAPABLE SYSTEM. WITH THE ABILITY FOR CONTROL TO BE TAKEN BY MASTER CONTROL.**

## Dayroom Control Areas

Is the large GeoVision screen showing the new 360° IP cameras and the original analog fixed cameras? Or are those new fixed cameras tied in locally with the GeoVision Video Servers? **YES.**  
**THE 360 IP CAMERAS GO DIRECTLY INTO THE TOWER NVR'S. WE ARE USING A GEOVISION ENCODER MODEL # GV-VS04H AT EACH TOWER FOR THE FIXED ANALOG CAMERAS THAT REPLACED THE BROKEN PTZ CAMERAS. (SOME ANALOG CAMERAS ARE STILL THE ORIGINAL PTZ CAMERA.)**

## Holding Area

If this panel could be re-used in this location would you like the option to leave it or should it be replaced with a touch screen as well? **NO. ALL OPERATOR PANELS TO BE REPLACED WITH A TOUCH SCREEN CAPABLE SYSTEM. WITH THE ABILITY FOR CONTROL TO BE TAKEN BY MASTER CONTROL.**

## Sally Port Area

1) Are each of the two new man gates to get:

Intercoms **YES ( BOTH SIDES OF EACH GATE. )**

Camera Views **YES ( IT IS ACCEPTABLE TO HAVE A MAST POLE CAMERA TO OVER LOOK BOTH SIDES OF GATE AT EACH GATE. – PROVIDED THE MASTER CONTROL OPERATOR AND IDENTIFY A PERSON ENTERING OR EXITING.) A FISHEYE CAMERA IS NOT ACCEPTABLE IN THIS LOCATION. ( these are not included in list below)**

Lock Control **YES**

If yes to lock control – Who provides the lock? **VENDOR TO PROVIDE LOCK \LATCH ASSEMBLY AND MATERIALS NEEDED TO OPERATE AND SECURE EACH GATE.**

What type? **CORRECTIONAL / OUTDOOR GRADE WITH KEY. ( BOTH GATES CAN BE KEYED WITH SAME KEY.) ALSO MUST PROVIDE THE ADDITIONAL MATERIALS NEEDED TO INTERGRATE TO CURRENT KERI CONTROL ACCESS SYSTEM.**

2) Can the conduit be mounted on the fence or must it buried up to the building? **METAL CONDUIT CAN BE ATTACHED / SECURED TO FENCING. (SEALTIGHT OR EQUIVALENT CONDUIT MATERIAL WILL NOT BE ACCEPTABLE.)**

**ADDITIONAL CAMERAS TO BE ADDED AND INCLUDED IN THE CCTV SYSTEM**

**Vendor to provide cameras and materials for installation.**

**25 cameras in total**

**9 Outdoor vandal proof Dome or equivalent**

**Kitchen dock facing kitchen Sallyport entrance**

**Dry Storage**

**Inmate bonding cell**

**Court holding Male Sallyport**

**Court holding Female holding**

**Left corner holding cell**

**Right corner holding cell**

**Medical Evaluation cell**

**Door out of Classifications**

**16 Interior dome ceiling tile mount or equivalent**

**Main Jail hallway facing Jail Admin & kitchen door**

**Main Jail hallway facing Booking & Sallyport entrance**

**Main Jail hallway facing tower 1 floor & Jail Sgt entrance**

**Hallway of old Jail facing Medical entrance**

**Laundry to Dispatch**

**Dispatch to Laundry**

**Laundry to old Jail**

**Warrants to Laundry**

**Criminal Court hallway to Court Holding**

**Main Jail hallway to Court Holding**

**Court Holding to Attorney Booth hallway**

**Juvenile Detention**

**4 in back hallway from General Sessions by Juvenile Detention to Court Holding.**

REVISION		
1		
2		
3		
4		



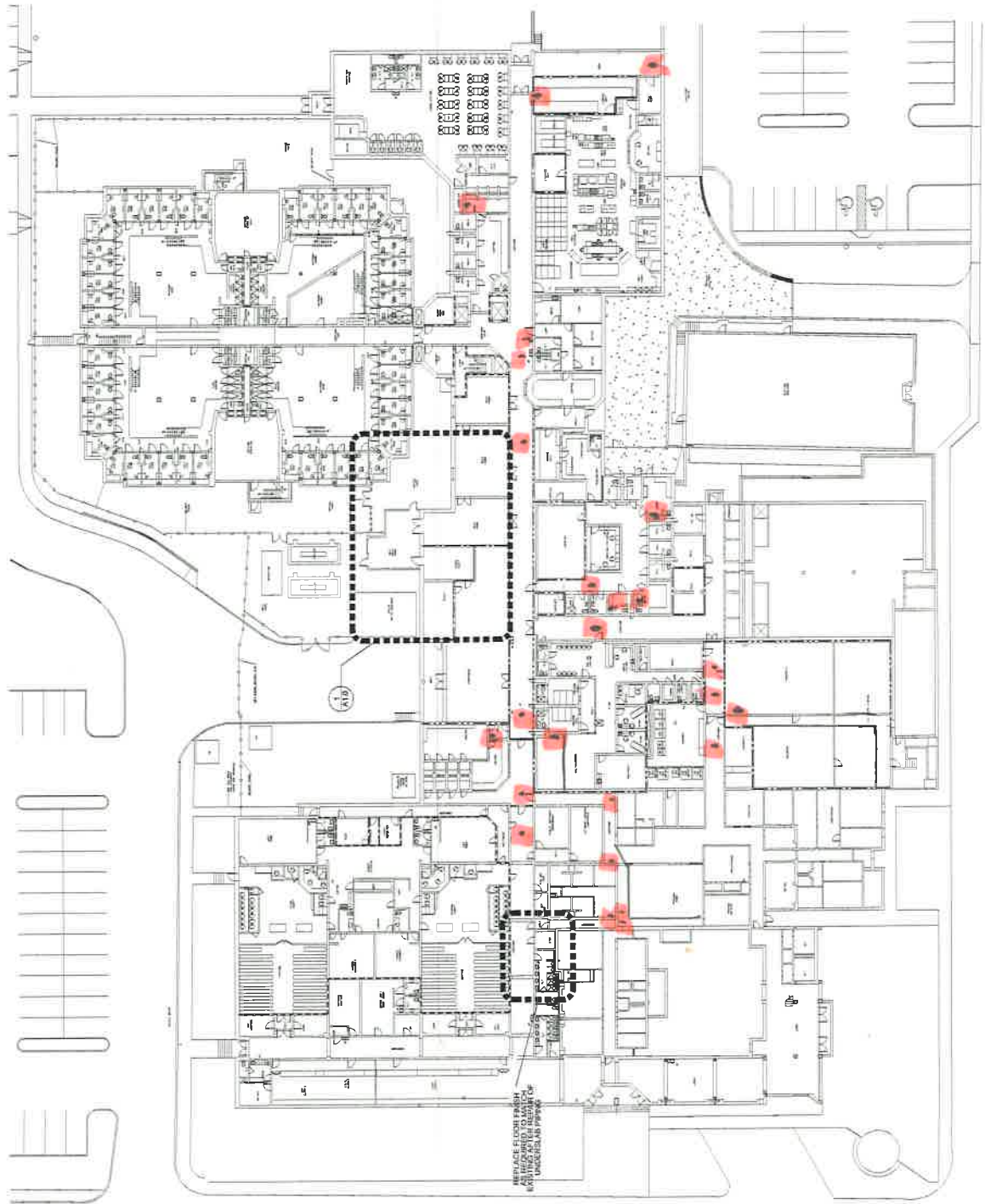


OVERALL PLAN  
 PLUMBING AND ELECTRICAL REPAIRS

**OVERALL PLAN**  
 Plumbing and Electrical Repairs for:  
**Summer County Jail**  
 Gallatin, TN

JOB NO.: 07112  
 DATE: 05/2012  
 DRAWN: [Name]  
 CHECKED: [Name]  
 SCALE: AS NOTED  
**A0.0**

**WALL LEGEND:**  
 1-HOUR WALL  
 2-HOUR WALL  
 4-HOUR WALL



**1 OVERALL PLAN**  
 SCALE: 1/8" = 1'-0"